





Innes Road Widening
Class Environmental
Assessment



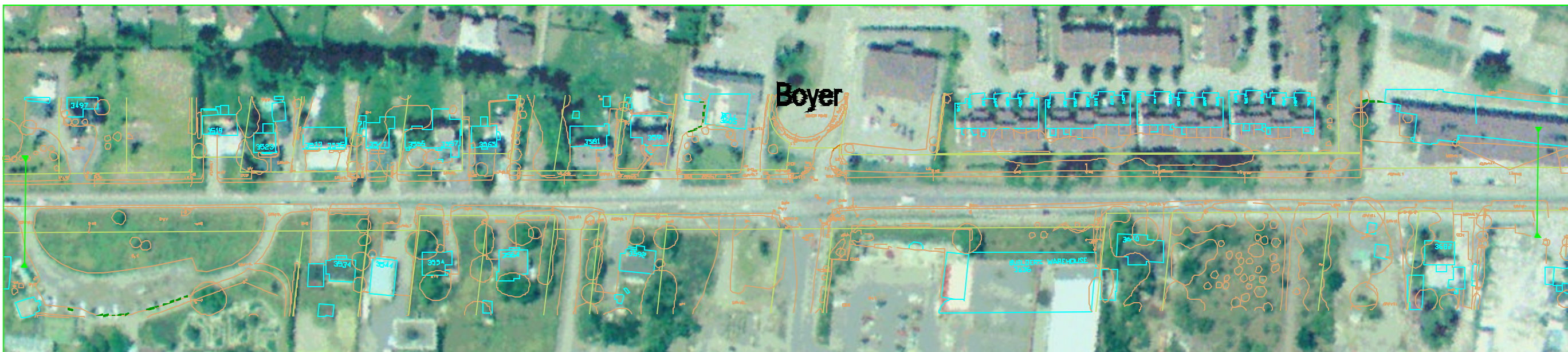
EXHIBIT 4
EASTERN SECTION
Preferred Design
Solution

Orléans Blvd.
to Trim Rd.
Sheet 2 of 10

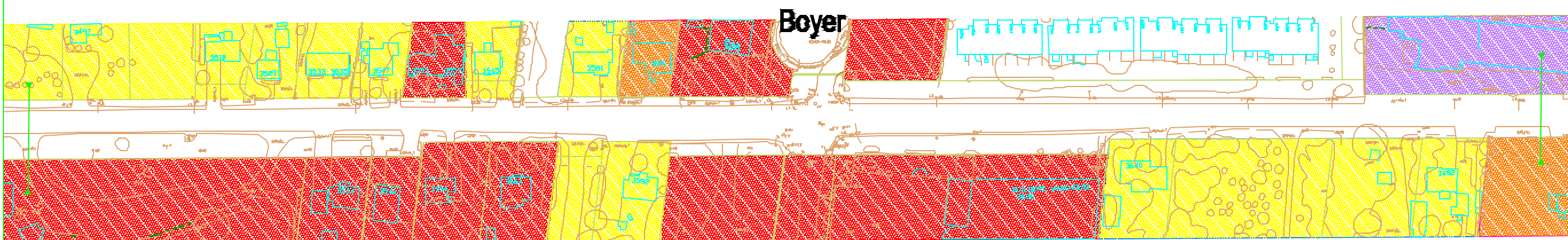
Legend

-  Commercial
-  Residential
-  Mixed Com/Res
-  Institutional
-  Match Line

November, 2001



Existing *Conditions Existantes*



Preferred Design Solution /
Solution de Conception Préférée

