

REGION OF OTTAWA-CARLETON
RÉGION D'OTTAWA-CARLETON

REPORT
RAPPORT

Our File/N/Réf. Your File/V/Réf.	50 20-99-R063Z
DATE	12 May 1999
TO/DEST.	Co-ordinator Transportation Committee
FROM/EXP.	Director Mobility Services and Corporate Fleet Services Environment and Transportation Department
SUBJECT/OBJET	ISLAND PARK DRIVE AND MERIVALE ROAD - INSTALLATION OF A TRAFFIC CONTROL SIGNAL AND ASSOCIATED INTERSECTION MODIFICATIONS

DEPARTMENTAL RECOMMENDATION

That Transportation Committee recommend Council approve the expenditure of up to \$110,000 to assist the National Capital Commission in the reconstruction of the intersection of Island Park Drive and Merivale Road in order that a traffic control signal can be installed.

BACKGROUND

The intersection of Island Park Drive and Merivale Road is under the jurisdiction of the National Capital Commission (NCC). The Commission has approached the Region of Ottawa-Carleton to contribute one-half the cost, up to \$110,000, to fund the installation of a traffic control signal and to construct the required roadway modifications (refer Annex A) in order that the proposed signal will operate effectively.

DISCUSSION

Island Park Drive and Merivale Road has a severe right angle collision history which can only be resolved by the installation of a traffic control signal. A traffic control signal is 100% warranted.

The table below contains the collision history for this intersection. There has been an average of 14.4 right angle collisions per year for the five years between 1994 and 1998. Right angle collisions are deemed preventable by the installation of a traffic control signal.

Year	Total Number of Collisions	Number of Right Angle Collisions
1994	15	13
1995	23	21
1996	9	8
1997	16	16
*1998	14	14
Total	77	72

* Collision numbers not verified.

The NCC has approached the Region to cost-share the installation of a traffic control signal and the construction of the roadway modifications in order that the signals can operate effectively.

Therefore, due to the poor collision history of this intersection and because it is at the terminus of a Regional road, it is proposed that the Environment and Transportation Department commit funds of up to \$110,000 to help fund this project.

The estimated cost to install a traffic control signal is \$150,000 and to construct the required roadway modifications is \$70,000 for a total cost of \$220,000.

CONSULTATION

The NCC has conducted public consultation with different groups, including the Island Park Drive Community Association, the Island Park Drive Community Consultative Group and the Traffic Calming Steering Committee which includes representatives of various Community Associates in the Island Park Drive area. Also, a draft of this report has been circulated to the Chair and Members of Council.

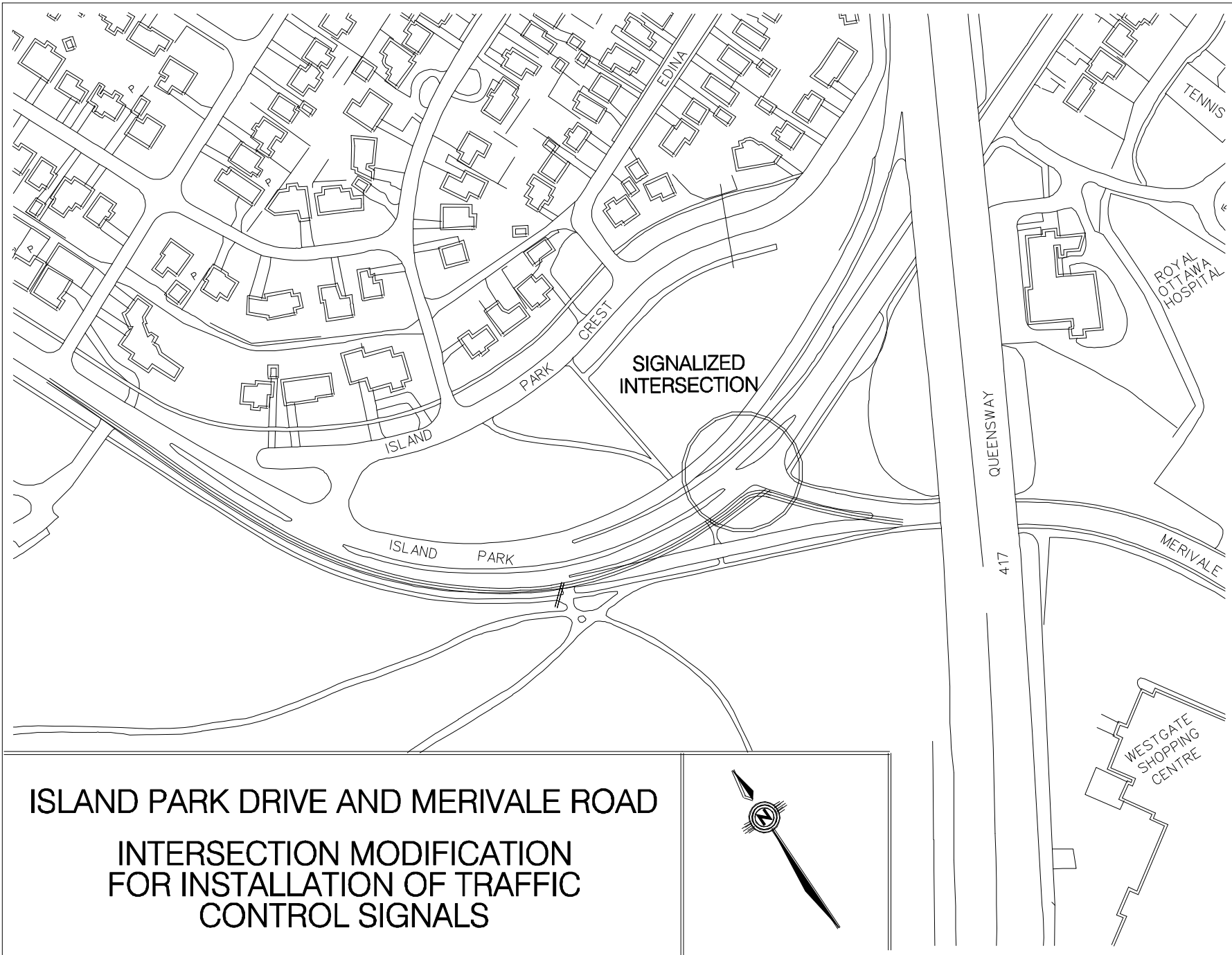
FINANCIAL

Funds are available in the 1999 Capital Budget, Account No. 912-37146 (Order No. 900117), New Traffic Control Signal Programme (Reference page 176). The NCC will be responsible for the annual maintenance and operating costs and will sign a legal agreement to this effect.

*Approved by
Doug Brousseau*

HLD/sc

Attach. (1)



**ISLAND PARK DRIVE AND MERIVALE ROAD
INTERSECTION MODIFICATION
FOR INSTALLATION OF TRAFFIC
CONTROL SIGNALS**



ANNEX A